

# Polywater® BonDuit®

## PE CONDUIT ADHESIVE



Joining HDPE to PVC conduit

**Strong, Watertight, and Airtight Adhesive for HDPE Conduit**

### PRODUCT BENEFITS

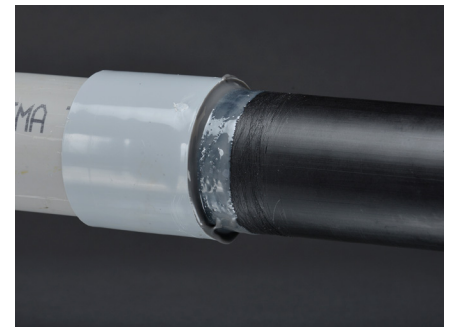
- **Versatile:** Bonds HDPE to PVC, rigid steel, and fiberglass conduits and fittings.
- **Superior:** Stronger pullout strength than mechanical couplings.
- **Durable:** Bonds with high strength within an hour.
- **Easy to Use:** Requires no special training.
- **Convenient Kits:** Contains all application components required for a quick installation.

### Creates Strong, Long-Lasting Bonds

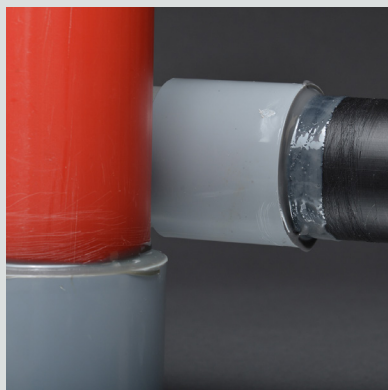
BonDuit® Conduit Adhesive creates a watertight and airtight conduit connection within an hour after application. The strong bond withstands movement and vibration, ideal for installation along roadsides or near electrical equipment such as transformers or switchgear.



Fiberglass pipe connection



Completed PE to PVC joint



PE to PVC conduit connections



Catalog # BT-KITG

## Multi-Use Cartridge Creates Numerous Connections

BonDuit Conduit Adhesive is a two-part curing adhesive supplied in a side-by-side cartridge. BonDuit requires a ratcheted dispensing tool and nozzle to mix and apply quickly and easily. Several connections can be made from a cartridge. The cartridge can be recapped for later use with a new nozzle.

### POLYWATER BONDUIT

Catalog #	Package Description	Units/Case
BT-KIT	2 - adhesive cartridges; 8 - mixing nozzles; 1 - strip of sanding cloth; 8 - Type RP™ cleaning wipes (cat #RP-1)	1
BT-KITG	Same as kit above; includes TOOL-50-11	1
BT-KITB6	12 - adhesive cartridges; 48 - mixing nozzles; 6 - strips of sanding cloth; 48 - Type RP cleaning wipes (cat# RP-1). Dispensing tool not included.	1
BT-KITB6G	Same as kit above; includes TOOL-50-11	1
BT-CART12PK	12 - adhesive cartridges 36 - mixing nozzles	1
TOOL-50-11	1 - dispensing tool	1
MXR-12T-10	10-pack of mixing nozzles	1

### SPECIFICATIONS AND APPLICATIONS:

- **The NEC Code:** Requires PVC or galvanized rigid steel pipe to be used for the transition from underground HDPE pipe to above ground connections. PVC pipe cement doesn't bond HDPE.
- **Adhesive Shear Strength:** Typical bond strengths were measured by joining two pieces of HDPE conduit with a PVC coupling and BonDuit Adhesive. The force required to pull apart the joint after 24 hours at 70° F (21° C) was measured. Conduit diameter pullout force 1½" = 1233 lbs./sq. ft.; 2" = 2,025 lbs./sq. ft.; 4" = 5,333 lbs./sq. ft.

#### CONTACT US

1-800-328-9384 Toll Free

1-651-430-2270 Main

1-651-430-3634 Fax

email: [support@polywater.com](mailto:support@polywater.com)

**IMPORTANT NOTICE:** The statements here are made in good faith based on tests and observations we believe to be reliable. However, the completeness and accuracy of the information is not guaranteed. Before using, the end-user should conduct whatever evaluations are necessary to determine that the product is suitable for the intended use.

American Polywater expressly disclaims any implied warranties and conditions of merchantability and fitness for a particular purpose. American Polywater's only obligation shall be to replace such quantity of the product proven to be defective. Except for the replacement remedy, American Polywater shall not be liable for any loss, injury, or direct, indirect, or consequential damages resulting from product's use, regardless of the legal theory asserted.

American  
**Polywater**<sup>®</sup>  
Corporation

11222 60th Street N | Stillwater, MN 55082 USA